

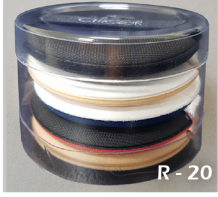


Rubycell & cushion

A sponge suitable for liquid-type cushions. It is often referred to as Rubycell Puff.



It is used for applying foundation BB cream, base make-up and liquid type cushions.
It is possible to control the sponge to absorb moisture(water) faster or slower.



Latex Free PU Sponge

Hydrophilic

The hydrophilic sponge absorbs moisture (water) very well and the product may swell when the sponge absorbs moisture (water).

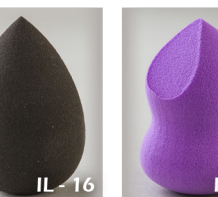
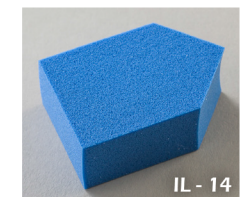


When powder or compact is applied with soaked sponge, moist make-up is available.
Since the product may swell due to moisture (water), it has weak durability and absorbs contents too much.

It can be produced in various shapes such as house, wedge, water drop and snowman.



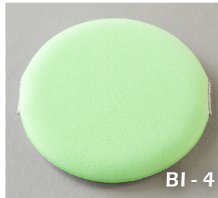
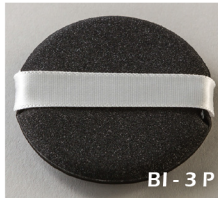
SUNDOO PUFF contributes to the world with the best technology and quality in the world



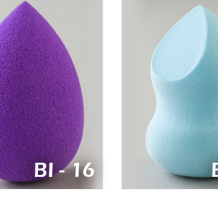
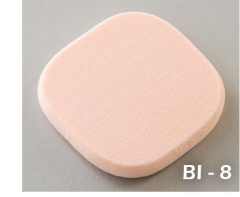
Latex Free PU Sponge

Hydrophobic

This sponge absorbs moisture(water) slowly. The product would not swell even if the sponge absorbs moisture (water).



It can be used with or without water.
It is widely used for powder, compact, foundation, BB cream, skin cover, and liquid type cushion.
It has compact style that can be put in a cosmetic case and it can be produced in various shapes that can be disposed.



Latex Free PU Sponge



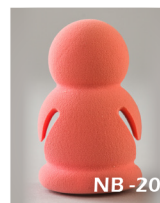
NBR Sponge

A sponge neutral to skin oil. The sponge wouldn't change much after absorbing oil



It is used for applying oily cosmetics such as skin cover or BB cream.

It can be produced in various standards such as circular-shape, square-shape, water drop-shape, and 3D



Latex Sponge NBR/SBR/NR

SBR Sponge

When the sponge absorbs oil, the sponge may deform and it may swell or become curved.



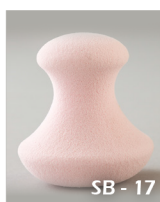
It is mainly used for applying less oily compact or twin cake.

It can be mixed with NBR to reduce the product cost or enhance the texture (application) .

It can be produced in various standards such as circular-shape, square-shape, pear-shape and 3D.



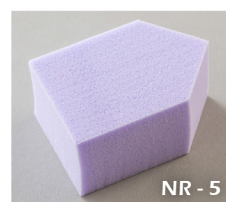
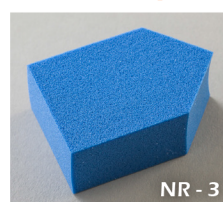
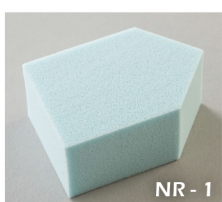
SUNDOO PUFF contributes to the world with the best technology and quality in the world



Latex Sponge NBR/SBR/NR

NR Sponge

NR is a natural latex and like SBR, the shape may change due to oil. It is mostly used as a disposable product for its cheap price.



Skin trouble or allergy may appear when NR is used on sensitive skin.

It can be produced in various shapes of house, wedge, heart and shield.





Flocked Foam (Flocking)

This product is made by planting the pile on urethane sponge. It is used for applying powder, compact and twin cake.



Although it has superior application or spreadability, skin trouble may appear in sensitive skin.

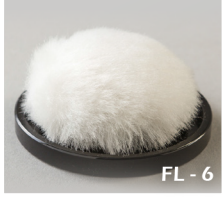


POWER PACT PUFF



Fluffy & Polyester (Velvet)

It is mainly used for applying powder or blusher.



It is suitable for velvet powder-type make-up and it has excellent touch and application when wearing make-up.



SUNDOO PUFF
since 1998

SUNDOO PUFF contributes to the world with the best technology and quality in the world



It has the high pile restoration power even after cleaning the puff.



POWER PACT PUFF

Cotton velour & Microfiber

The fabric has soft feel and has superior texture. It has low price. It is the most widely used for using powder-type cosmetics.



“

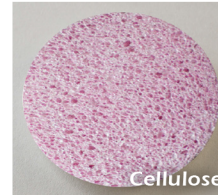
I do not claim my own thinking for a customer-centered mindset, We will keep our passion and commitment to constantly strive to find the color of our customers.

”

POWER PACT PUFF

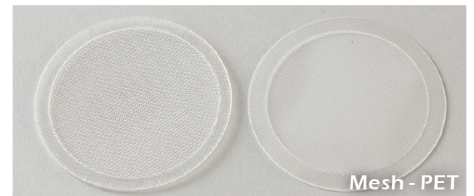
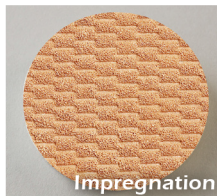
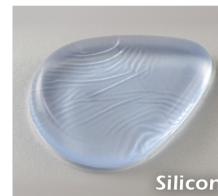
Cleansing Puff

Cellulose / Konjac / Natural / Viscose /
Filter / PVA sponge



Silicon & Others

Silicon / Impregnation / Mesh & EVA / Emery board
(& Nail buffer) / Eyebrow lazer & scissors



SUNDOO PUFF
since 1998

Contact Us

75, Gimpo-daero 2435beon-gil, Gimpo-si, Gyeonggi-do, Republic of Korea
T: +82-31-998-6331 | F: +82-50-4491-7779 | E-mail: sundoopuff@gmail.com